

QL-21B load cells are available in the capacities from 0.5t to 10t

Alloy steel & stainless steel construction with single shear beam type.

Hermetically welding , waterproof, anti-corrosion and suitable for all kinds of environment.

Integral structure and easy installation.

Suitable for electronic platform scales, truck scale, floor scale , hopper scale and other electronic weighing devices.



Features:

Capacity : 0.5t to 10t

Defend grade: IP67 & IP68

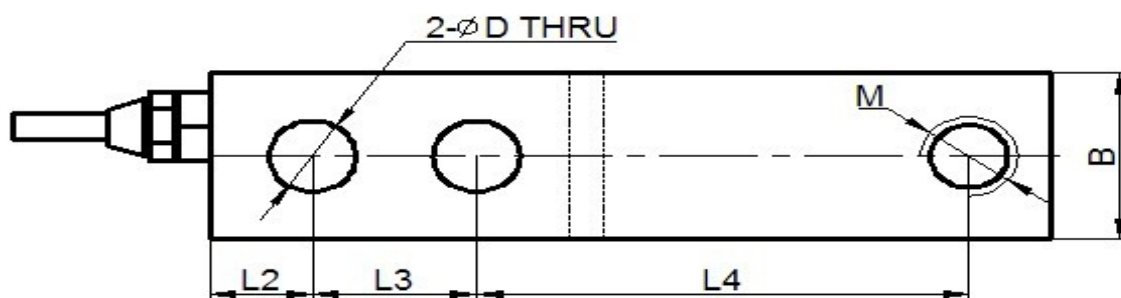
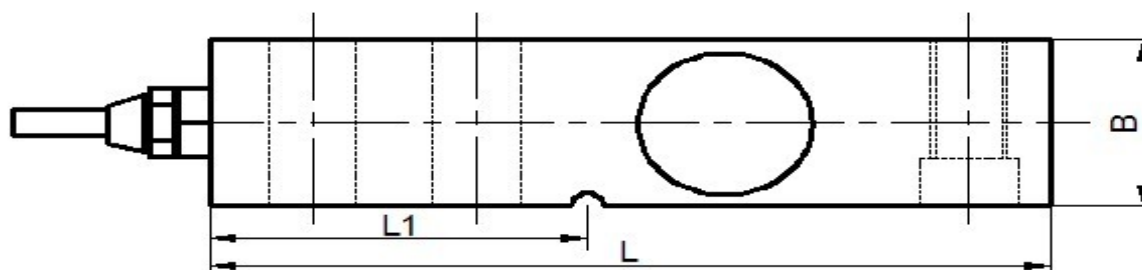
High accuracy.

Alloy steel & stainless steel single shear beam

Low profile and nice exterior

The cable length could be chose by customer's application.

Electrical connection and Dimensions:



CAP	L	L1	L2	L3	L4	D	B	M
0.5~2T	130	56.5	15.8	25.4	76.2	13.5	31.8	M16x2
2.5~5T	171.8	77.2	19.1	38.1	95.3	20	38.1	M20x2.5
10T	222.5	101.6	25.4	50.8	120.7	26.2	50.8	M24x2

QY Electronic Co Ltd

Address: No. 1032, Xinghan Road, Hantai District, Hanzhong, Shaanxi, China (Mainland)

Website: www.qysensor.com

E-mail: info@qysensor.com

TEL: +86-(0)916-2257989

Zip: 723000

Technical Specifications

Specifications:			
Capacity	t	0.5, 1, 2, 5, 10	
Safe overload	%FS	150	
Ultimate overload	%FS	200	
Rated output	mV/V	3.0 ± 0.003	
Excitation voltage	Vdc	9 ~ 12	
Combined error	%FS	± 0.03	±0.02
Zero unbalance	%FS	± 1	
Non-linearity	%FS	± 0.03	± 0.02
Hysteresis	%FS	± 0.03	± 0.02
Repeatability	%FS	± 0.02	± 0.01
Creep	%FS/30min	± 0.03	± 0.02
Input resistance	Ω	350 ± 5	
Output resistance	Ω	350 ± 3	
Insulation resistance	M Ω	≥ 5000 @ 50 Vdc	
Operating temperature range	°C	-20 ~ +55	
Compensated temperature range	°C	-10 ~ +40	
Temperature coefficient of SPAN	%FS/10°C	± 0.025	± 0.017
Temperature coefficient of ZERO	%FS/10°C	± 0.03	± 0.03

Electrical connection:

- Excitation+ red Excitation- black Signal+ green Signal- white
- Four-core shielded cable with polyethylene.
- Cable diameter : ϕ 5mm
- Cable length: 3m

The cable length could be chose by customer's application.

QY Electronic Co Ltd