

QH-21 load cells are available in the capacities from 0.5t to 5t.

Alloy steel & stainless steel construction with single shear beam type.

Silicon adhesive sealed inside, waterproof, anti-corrosion and suitable for all kinds of environment.

Integral structure and easy installation.

Suitable for electronic platform scale, electronic railroad track scale, floor scale and other electronic weighing devices.

Features:

Capacity : 0.5t to 5t

Defend grade: IP66

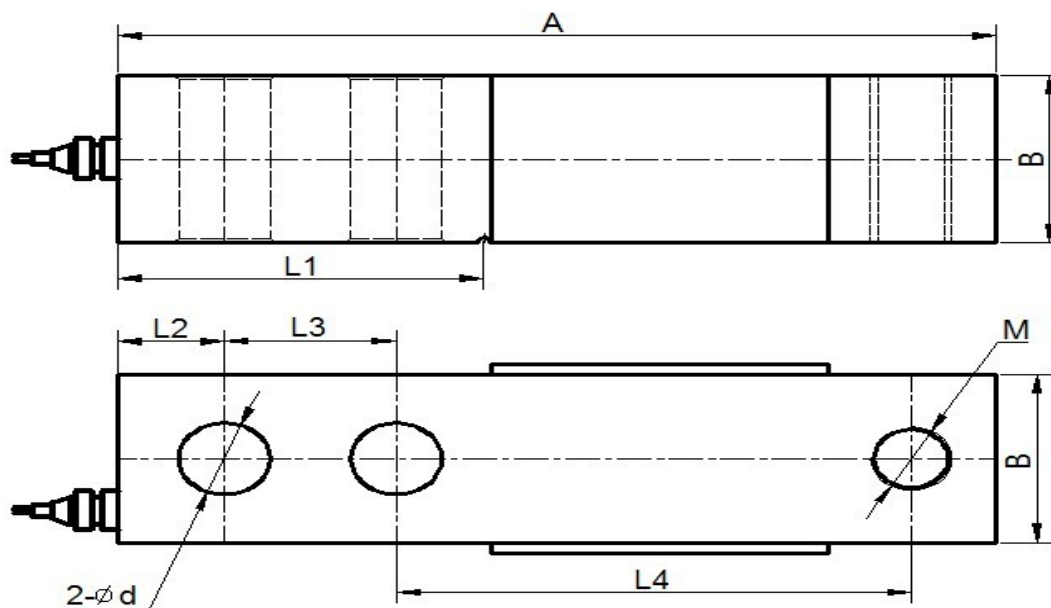
High accuracy.

Alloy steel & stainless steel single shear beam

Low profile and nice exterior.



Electrical connection and Dimensions:



Cap(kg)	500	1000	1500	2000	2500	3000	5000
A (mm)	130			171.5			
L1(mm)	54.2			77.2			
L2(mm)	15.8			19.1			
L3(mm)	25.4			38.1			
L4(mm)	76.2			95.3			
d(mm)	13.5			20			
B(mm)	31.8			38.1			
M	M12x1.75			M18x1.5			

Technical Specifications

Specifications:		
Capacity	t	0.5,1,1.5,2,2.5,3,5
Safe overload	%FS	150
Ultimate overload	%FS	200
Rated output	mV/V	3.0 ± 0.003
Excitation voltage	Vdc	9 ~ 12
Combined error	%FS	± 0.02 & ±0.03
Zero unbalance	%FS	± 1
Non-linearity	%FS	± 0.02
Hysteresis	%FS	± 0.02
Repeatability	%FS	± 0.02
Creep	%FS/30min	± 0.02
Input resistance	Ω	350 ± 5
Output resistance	Ω	350 ± 3
Insulation resistance	M Ω	≥ 5000 @ 50 Vdc
Operating temperature range	°C	-20 ~ +55
Compensated temperature range	°C	-10 ~ +40
Temperature coefficient of SPAN	%FS/10°C	± 0.02
Temperature coefficient of ZERO	%FS/10°C	± 0.03

Electrical connection:

- Excitation+ red Excitation- black Signal+ green Signal- white
- Four-core shielded cable with polyethylene.
- Cable diameter : \varnothing 5mm
- Cable length: 3m

The cable length could be chose by customer's application.