

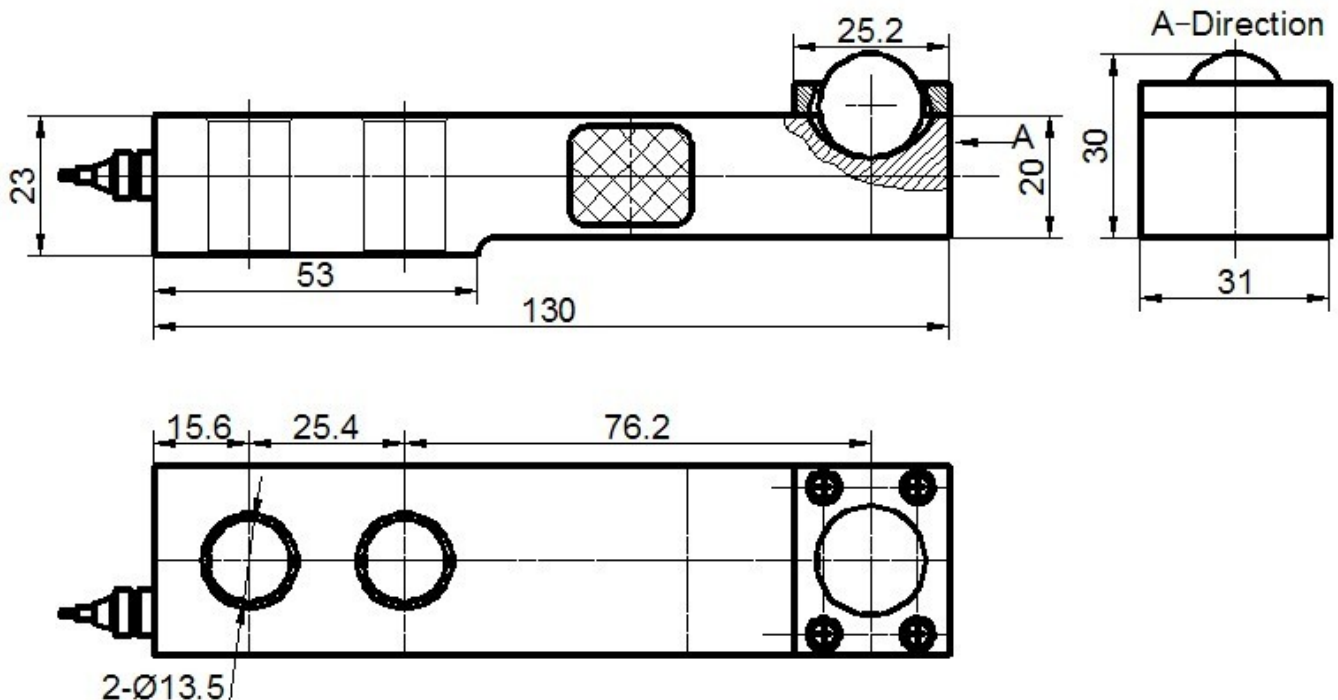
QH-21G load cells are available in the capacities from 0.5t to 2t
Alloy steel & stainless steel construction with single shear beam type.
Silicon adhesive sealed ,waterproof, anti-corrosion and suitable for all kinds of environment.
Integral structure and easy installation.
Suitable for electronic platform scales, truck scale, floor scale , hopper scale and other electronic weighing devices.



Features:

Capacity : 0.5t to 2t
Defend grade: IP66
High accuracy.
Alloy steel & stainless steel single shear beam
Low profile and nice exterior.

Electrical connection and Dimensions:



Technical Specifications

Specifications:		
Capacity	t	0.5, 1, 1.5, 2
Safe overload	%FS	150
Ultimate overload	%FS	200
Rated output	mV/V	2.0 ± 0.003
Excitation voltage	Vdc	9 ~ 12
Combined error	%FS	±0.03
Zero unbalance	%FS	± 1
Non-linearity	%FS	± 0.03
Hysteresis	%FS	± 0.03
Repeatability	%FS	± 0.02
Creep	%FS/30min	± 0.025
Input resistance	Ω	350 ± 5
Output resistance	Ω	350 ± 3
Insulation resistance	M Ω	≥ 5000 @ 50 Vdc
Operating temperature range	°C	-20 ~ +55
Compensated temperature range	°C	-10 ~ +40
Temperature coefficient of SPAN	%FS/10°C	± 0.02
Temperature coefficient of ZERO	%FS/10°C	± 0.03

Electrical connection:

Excitation+ red Excitation- black Signal+ green Signal- white

Four-core shielded cable with polyethylene.

Cable diameter : \varnothing 5mm

Cable length: 3 m

The cable length could be chose by customer's application.