

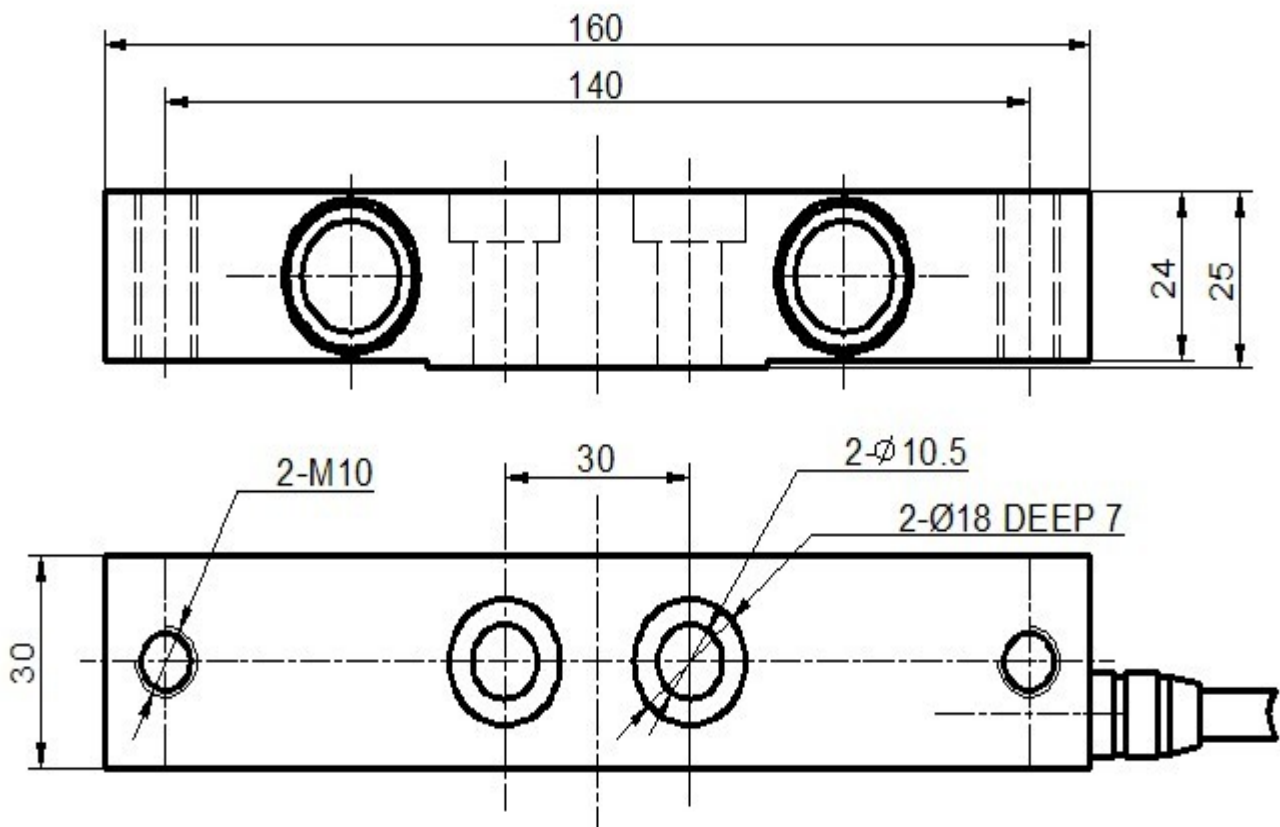
QH-41B load cells are available in the capacities of 2t,
Alloy steel construction with double shear beam type.
Silicon adhesive sealed inside, waterproof, anti-corrosion, suitable for multiform environments.
Suitable for truck scales, steam lines and other electronic weighing devices.



Features:

Capacity: 2t
Defend grade: IP66
High accuracy, reliable performance,
Alloy steel construction,
Integral structure, and easy installation.

Electrical connection and Dimensions:



QY Electronic Co Ltd

Address: No. 1032, Xinghan Road, Hantai District, Hanzhong, Shaanxi, China (Mainland)

Website: www.qysensor.com

TEL: +86-(0)916-2257989

E-mail: info@qysensor.com

Zip: 723000

Technical Specifications

Specifications:		
Capacity	t	2
Safe overload	%FS	150
Ultimate overload	%FS	200
Rated output	mV/V	2.0±0.02 3.0±0.03
Excitation voltage	Vdc	10 ~ 15
Combined error	%FS	± 0.03
Zero unbalance	%FS	± 1
Non-linearity	%FS	± 0.03
Hysteresis	%FS	± 0.03
Repeatability	%FS	± 0.02
Creep	%FS/30min	± 0.03
Input resistance	Ω	700± 10
Output resistance	Ω	700 ± 5
Insulation resistance	M Ω	≥ 5000 @ 50 Vdc
Operating temperature range	℃	-20 ~ +60
Compensated temperature range	℃	-10 ~ +50
Temperature coefficient of SPAN	%FS/10℃	± 0.02
Temperature coefficient of ZERO	%FS/10℃	± 0.03

Electrical connection:

- Excitation+ red Excitation- black Signal+ green Signal- white
- Four-core shielded cable with polyethylene.
- Cable diameter : \varnothing 5mm
- Cable length: 6m

The cable length could be chose by customer's application.

QY Electronic Co Ltd

Address: No. 1032, Xinghan Road, Hantai District, Hanzhong, Shaanxi, China (Mainland)

Website: www.qysensor.com

TEL: +86-(0)916-2257989

E-mail: info@qysensor.com

Zip: 723000