

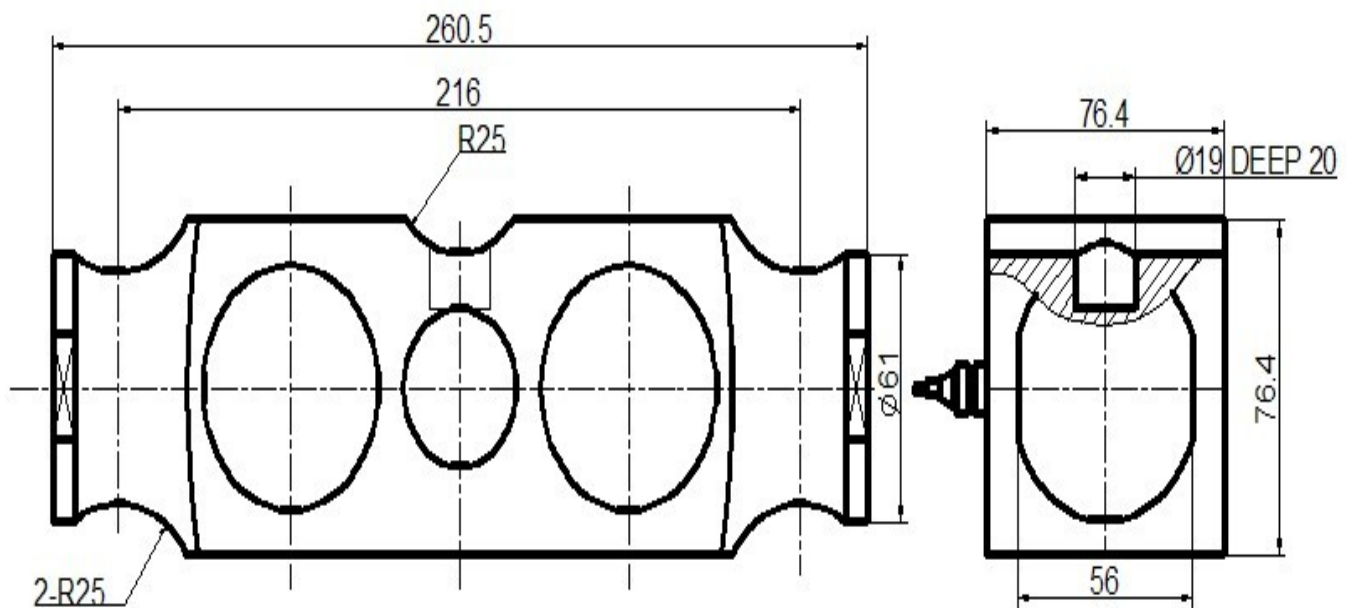
QH-42A load cells are available in the capacities from 50klb to 100klb,
Alloy steel construction with double shear beam type,
Silicon adhesive sealed inside, waterproof and anti-corrosion, suitable for multiform environments,
Integral structure and easy installation.
Suitable for electronic truck scales, railway scales and other electronic weighing devices.

**Features:**

Capacity: 50klb to 100klb

Defend grade: IP67

High accuracy., reliable performance,
integral structure, ,and easy installation.

Electrical connection and Dimensions:

Technical Specifications

Specifications:			
Capacity	klb	50,60,75,100	
Safe overload	%FS	150	
Ultimate overload	%FS	200	
Rated output	mV/V	2.0 ± 0.02	3.0± 0.03
Excitation voltage	Vdc	10 ~ 15	
Combined error	%FS	± 0.03	
Zero unbalance	%FS	± 1	
Non-linearity	%FS	± 0.03	
Hysteresis	%FS	± 0.03	
Repeatability	%FS	± 0.02	
Creep	%FS/30min	± 0.05	
Input resistance	Ω	700 ± 10	
Output resistance	Ω	700 ± 5	
Insulation resistance	M Ω	≥ 5000 @ 50 Vdc	
Operating temperature range	℃	-20 ~ +55	
Compensated temperature range	℃	-10 ~ +40	
Temperature coefficient of SPAN	%FS/10℃	± 0.03	
Temperature coefficient of ZERO	%FS/10℃	± 0.03	

Electrical connection:

Excitation+ red Excitation- black Signal+ green Signal- white

Four-core shielded cable with polyethylene.

Cable diameter : Ø 5mm

Cable length: 3m

The cable length could be chose by customer's application.