

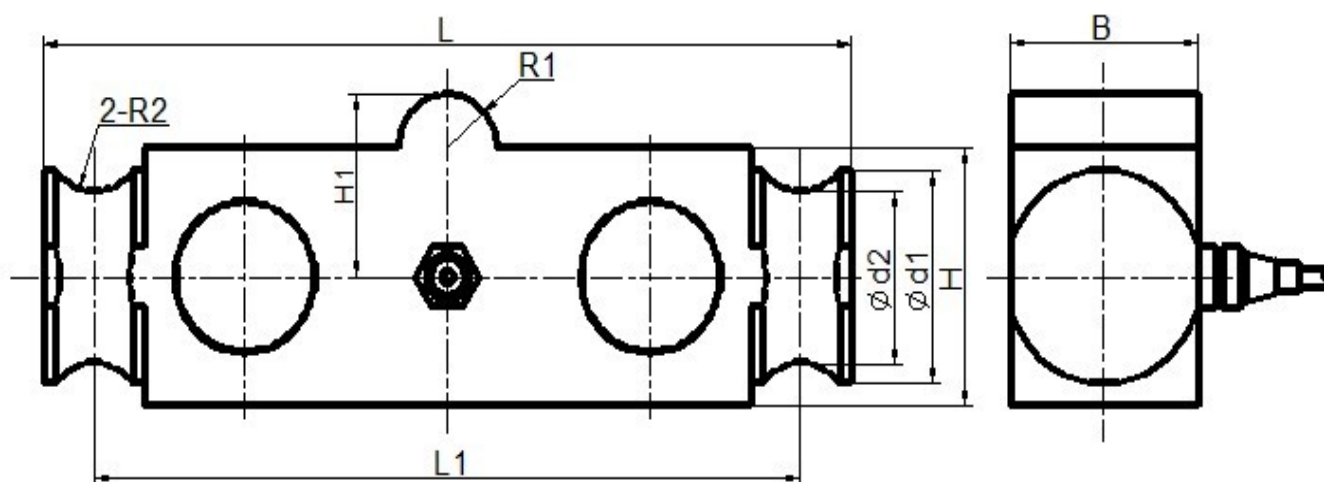
QH-46 load cells are available in the capacities from 25 klb to 100 klb  
 Alloy steel or stainless steel construction with double shear beam type.  
 Silicon adhesive sealed inside, anti-corrosion, suitable for multiform environments.  
 Suitable for truck scales, railway scales, steam lines and other electronic weighing devices.



### Features:

Capacity: 25klb to 100klb  
 Defend grade: IP67  
 High accuracy, reliable performance.  
 Integral structure, and easy installation.

### Electrical connection and Dimensions:



Cap(klb)	L	L1	H	H1	B	Ød1	Ød2	R1	R2
25~40	209.6	184.5	62	44.6	49.5	50.6	41.5	12.7	12.7
50~75	292.2	254.2	62	50.7	49.5	56.2	43.2	25.4	19
100	368.2	317.6	98	76.2	73.8	81.5	62.2	38	25.4

## QY Electronic Co Ltd

Address: No. 1032, Xinghan Road, Hantai District, Hanzhong, Shaanxi, China (Mainland)

Website: [www.qysensor.com](http://www.qysensor.com)

TEL: +86-(0)916-2257989

E-mail: [info@qysensor.com](mailto:info@qysensor.com)

Zip: 723000

### Technical Specifications

Specifications:		
capacity	klb	25,40,50,75,100
safe overload	%FS	150
ultimate overload	%FS	200
rated output	mV/V	2.0± 0.02      3.0± 0.03
excitation voltage	Vdc	10 ~ 15
combined error	%FS	± 0.03
zero unbalance	%FS	± 1
non-linearity	%FS	± 0.03
hysteresis	%FS	± 0.03
repeatability	%FS	± 0.02
creep	%FS/30min	± 0.05
input resistance	Ω	700± 10
output resistance	Ω	700 ± 5
insulation resistance	M Ω	≥ 5000 @ 50 Vdc
operating temperature range	°C	-20 ~ +55
compensated temperature range	°C	-10 ~ +40
temperature coefficient of SPAN	%FS/10°C	± 0.03
temperature coefficient of ZERO	%FS/10°C	± 0.03

### Electrical connection:

Excitation+ red      Excitation- black      Signal+ green      Signal- white

Four-core shielded cable with polyethylene. Cable is not connected with elastomer.

Cable length: 5 m

Cable diameter:  $\varnothing$  5mm

The cable length could be chose by customer's application.