

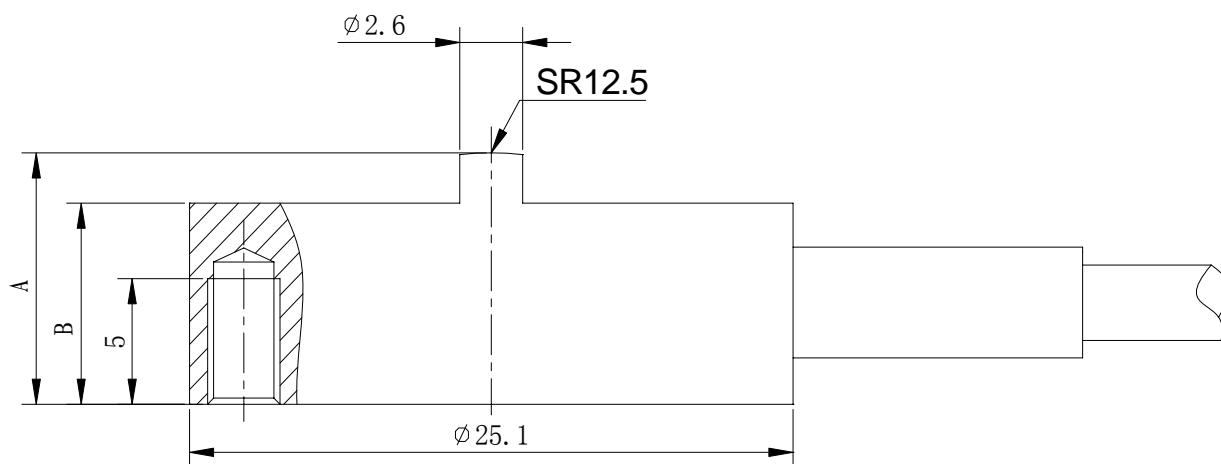
QH-62A load cells are available in the capacities from 5kg to 500kg.  
 Alloy steel or aluminum alloy construction with spoke type.  
 Silicon adhesive sealed inside, waterproof, anti-corrosion and suitable for all kinds of environment.  
 Suitable for industrial control, dosing systems and other electronic weighing systems.



**Features:**

- Capacity: 5kg to 500kg
- IP Rating: IP66
- Single force.
- Reliable performance, integral installation and easy installation.

**Electrical connection and Dimensions:**



Cap (kg)	5	10~200	500
A	10	11	15
B	8	9	12

**Technical Specifications**

**QY Electronic Co Ltd**

Address: No. 1032, Xinghan Road, Hantai District, Hanzhong, Shaanxi, China (Mainland)

Website: [www.qysensor.com](http://www.qysensor.com)

E-mail: [info@qysensor.com](mailto:info@qysensor.com)

TEL: +86-(0)916-2257989

Zip: 723000

<b>Specifications:</b>		
Capacity	kg	5,10,50,100,200,300, 500
Safe overload	%FS	120
Ultimate overload	%FS	150
Rated output	mV/V	1.0 ± 0.1
Excitation voltage	Vdc	9 ~ 12
Combined error	%FS	± 0.2
Zero unbalance	%FS	± 10
Non-linearity	%FS	± 0.2
Hysteresis	%FS	± 0.2
Repeatability	%FS	± 0.1
Creep	%FS/30min	± 0.1
Input resistance	Ω	350 ± 10 & 700±10
Output resistance	Ω	350 ± 10 & 700±10
Insulation resistance	M Ω	≥ 5000 @ 50 Vdc
Operating temperature range	°C	-20 ~ +55
Compensated temperature range	°C	-10 ~ +40
Temperature coefficient of SPAN	%FS/10°C	± 0.5
Temperature coefficient of ZERO	%FS/10°C	± 0.5

**Electrical connection:**

Excitation+ red    Excitation- black    Signal+ green    Signal- white

Four-core shielded cable with polyethylene.

Cable diameter :  $\varnothing$  3mm

Cable length: 2m