

QH-72 load cells are available in the capacity of 20t.

Stainless steel construction with Column type. Fully seal welding ,silicon adhesive sealed inside,waterproof, grease proofing,anti-corrosion and suitable for all kinds of environment. Column type structure design.Tension and/or compression loading and easy installation. Suitable for truck scale, railway scale and other electronic weighing devices.



Features:

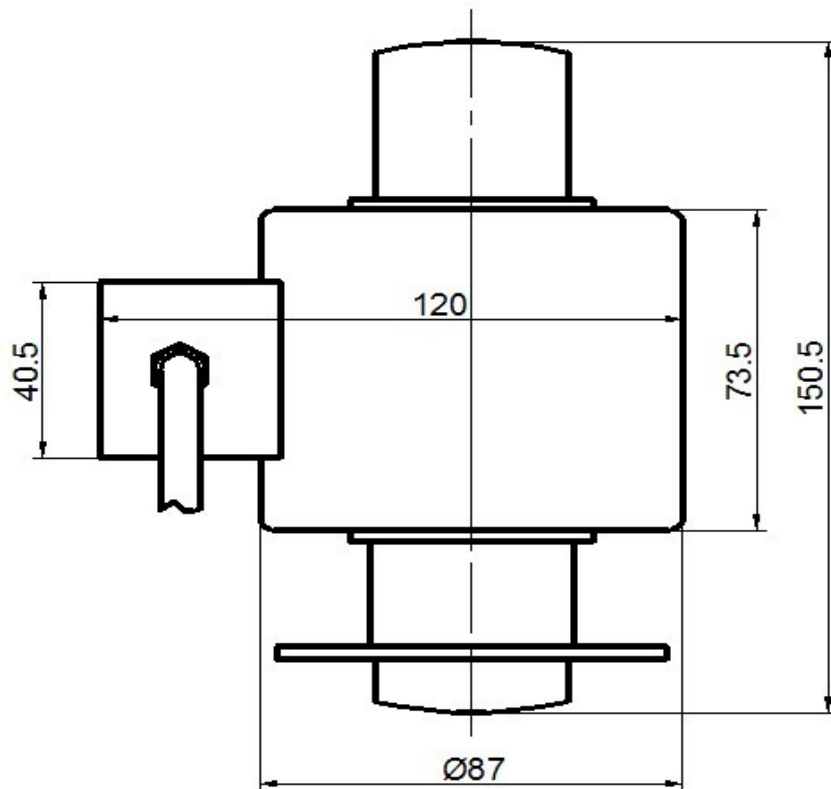
Capacity : 20t.

IP grade: IP67 & IP68

High accuracy, reliable performance

Column type structure design , easy installation.

Electrical connection and Dimensions:



QY Electronic Co Ltd

Address: No. 1032, Xinghan Road, Hantai District, Hanzhong, Shaanxi, China (Mainland)

Website: www.qysensor.com

TEL: +86-(0)916-2257989

E-mail: info@qysensor.com

Zip: 723000

Technical Specifications

Specifications:			
Capacity	t	20	
Safe overload	%FS	150	
Ultimate overload	%FS	300	
Rated output	mV/V	2.0 ± 0.002	
Excitation voltage	Vdc	9 ~ 12	
Combined error	%FS	± 0.05	± 0.03
Zero unbalance	%FS	± 1.5	
Non-linearity	%FS	± 0.05	± 0.03
Hysteresis	%FS	± 0.05	± 0.03
Repeatability	%FS	± 0.03	± 0.02
Creep	%FS/30min	± 0.03	± 0.02
Input resistance	Ω	350 ± 5	700 ± 10
Output resistance	Ω	350 ± 3	700 ± 5
Insulation resistance	M Ω	≥ 5000 @ 50 Vdc	
Operating temperature range	°C	-20 ~ +70	
Compensated temperature range	°C	-10 ~ +40	
Temperature coefficient of SPAN	%FS/10°C	± 0.03	± 0.02
Temperature coefficient of ZERO	%FS/10°C	± 0.03	± 0.03

Electrical connection:

Excitation+ red Excitation- black Signal+ green Signal- white

Four-core shielded cable with polyethylene.

Cable diameter : \varnothing 5mm

Cable length: 10 m

The cable length could be chose by customer's application.