

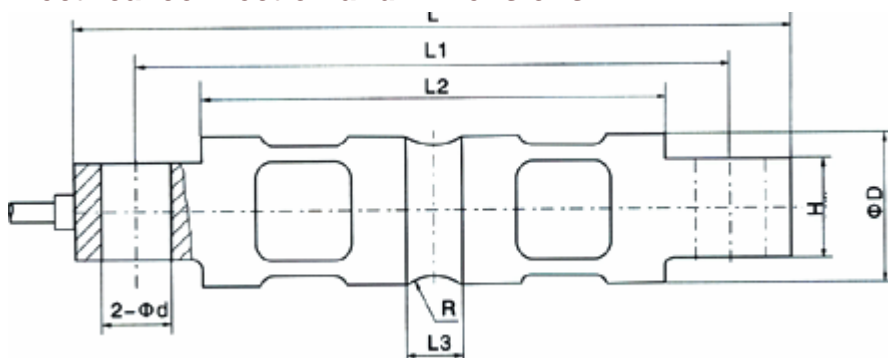
QH-45A load cells are available in the capacities from 5klb to 250klb,
 Alloy steel construction with double shear beam type,
 Silicon adhesive sealed inside, waterproof and anti-corrosion, suitable for multiform environments
 Integral structure and easy installation.
 Suitable for electronic truck scales, railway scales and other electronic weighing devices.



Features:

- Capacity: 5klb to 250klb
- Defend grade: IP66 & IP68
- High accuracy.
- Alloy steel construction
- Integral structure, reliable performance, and easy installation.

Electrical connection and Dimensions:



Capacity (Klb)	L	L1	L2	L3	D	H	d	R
5~10	206.2 (8.12)	174.6 (6.88)	133.1 (5.24)	15.7 (0.62)	φ43.2 (1.7)	28.4 (1.12)	φ16.7 (0.66)	R12.7 (0.5)
20	206.2 (8.12)	174.6 (6.88)	133.1 (5.24)	21.3 (0.84)	φ49.5 (1.95)	28.4 (1.12)	φ16.7 (0.66)	R12.7 (0.5)
30~75	260.4 (10.25)	215.9 (8.5)	165.1 (6.5)	25.4 (1.0)	φ76.2 (3.0)	60.2 (2.37)	φ26.9 (1.06)	R25.4 (1.0)
100	285.8 (11.25)	241.3 (9.5)	190.2 (7.49)	31.0 (1.22)	φ88.9 (3.5)	63.5 (2.5)	φ26.9 (1.06)	R38.1 (1.5)
150	285.8 (11.25)	241.3 (9.5)	190.2 (7.49)	31.0 (1.22)	φ99.1 (3.90)	71.1 (2.80)	φ26.9 (1.06)	R38.1 (1.5)
200~250	408.9 (16.1)	330.3 (13.0)	254.0 (10.0)	31.7 (1.25)	φ136.6 (5.38)	116.8 (4.6)	φ39.6 (1.56)	R50.8 (2.0)

Technical Specifications

Specifications:		
Capacity(Emax)	klb	5,10,15,20,30,40,50,60,75,90...250
Rated output	mV/V	3.0±0.008
Accuracy class		C3
Maximum number of verification intervals	nmax	3000
Minimum load cell verification intervals	Vmin	Emax/10000
Combined error	%FS	≤±0.02
Creep	%FS/30min	≤±0.016
Temperature coefficient of SPAN	%FS/10℃	≤±0.011
Temperature coefficient of ZERO	%FS/10℃	≤±0.015
Input resistance	Ω	700 ± 7
Output resistance	Ω	703 ± 4
Zero unbalance	%FS	≤±1
Compensated temperature range	℃	-10 ~ +40
Operating temperature range	℃	-35 ~ +70
Recommended excitation voltage	Vdc	5~ 12
Maximum excitation voltage	Vdc	18
Safe overload	%FS	150
Ultimate overload	%FS	300

Electrical connection:

Excitation+ red Excitation- black Signal+ green Signal- white

Four-core shielded cable with polyethylene. Cable is not connected with elastomer.

Cable length: 9 m

Cable diameter : 5 ±0.2 mm , 8mm ± 0.2 mm

The cable length could be chose by customer's application.